

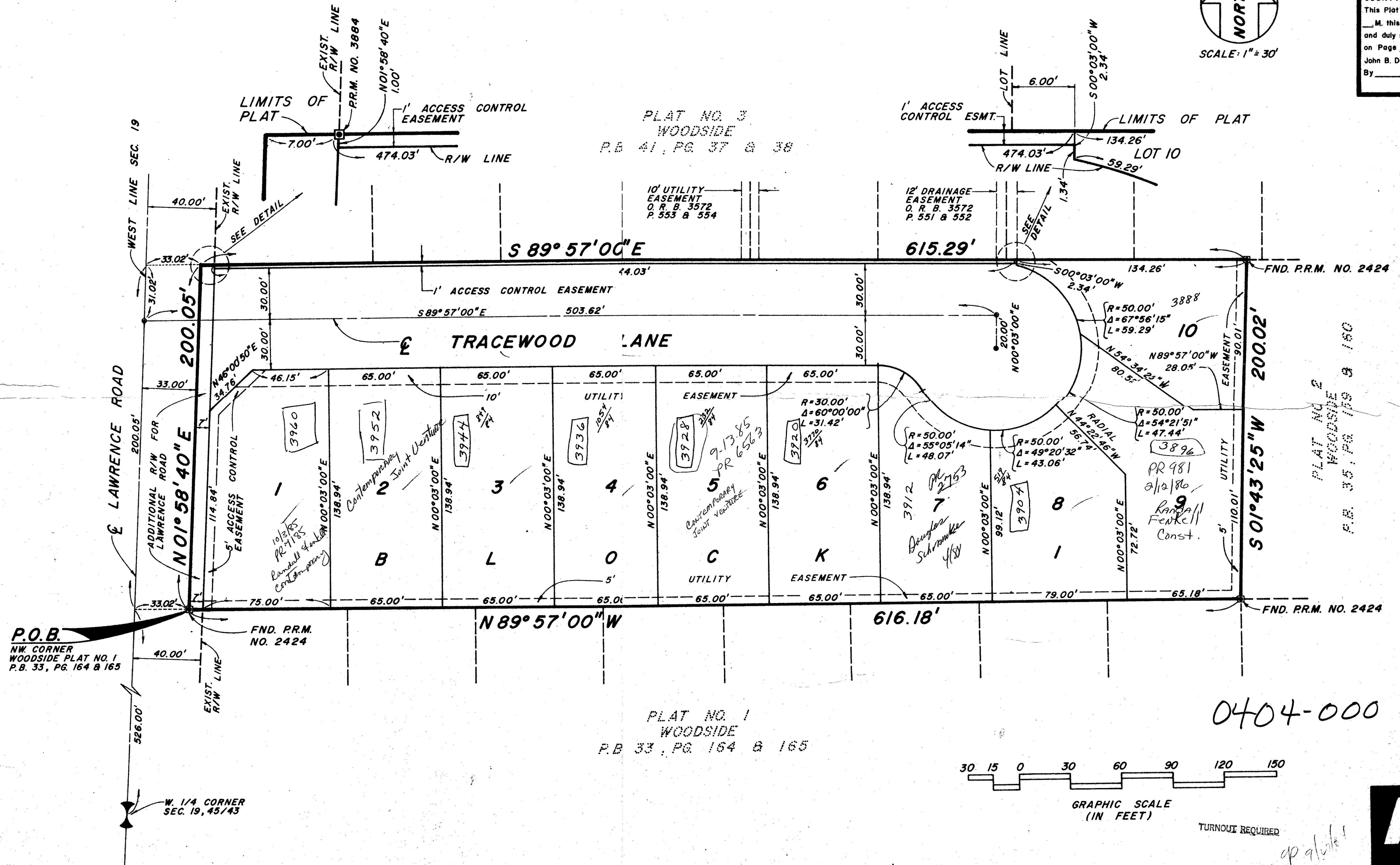
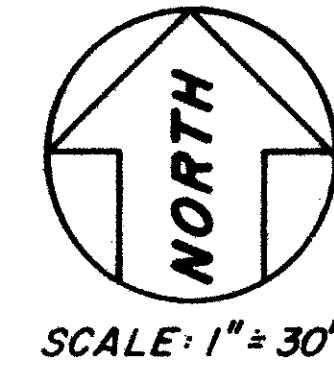
# TRACEWOOD

PALM BEACH COUNTY, FLORIDA

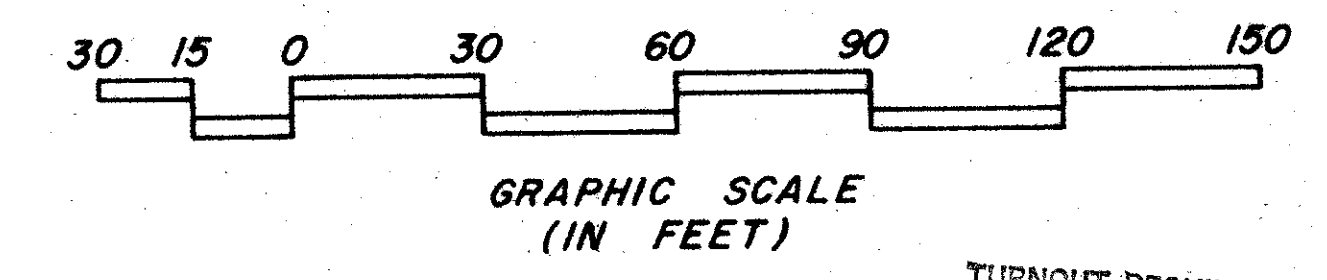
SHEET 2 OF 2 JANUARY 1984

8  
49

STATE OF FLORIDA  
COUNTY OF PALM BEACH  
This Plat was filed for record at  
M. this day of 19  
and duly recorded in Plat Book No.  
on Page  
John B. Dunkle, Clerk Circuit Court  
By D.C.



PLAT NO. 1  
WOODSIDE  
P.B. 33, PG. 164 & 165



0404-000

TURNOUT REQUIRED  
op 9/10/81  
Tracewood  
19/45/43  
SUBDIVISION +  
BOOK 49  
FLOOD ZONE B  
QUAD # 20  
SE N/A  
PUD NAME N/A  
PAGE 8  
FLOOD MAP # 90B  
ZONING RS  
ZIP CODE 33456

TRACEWOOD 49/8

**MICHAEL B. SCHORAH & ASSOCIATES, INC.**  
ENGINEERS  
PLANNERS  
DEVELOPMENT CONSULTANTS  
1858 FOREST HILL BLVD.  
SUITE 205  
WEST PALM BEACH,  
FLORIDA 33406  
PHONE: (305) 948-0000

DRAWING NUMBER  
49/8

DRAWING NUMBER

DRAWING NUMBER

DRAWING NUMBER

PLAN HOLD CORPORATION • IRVINE, CALIFORNIA  
REGISTERED BY NUMBER 07348